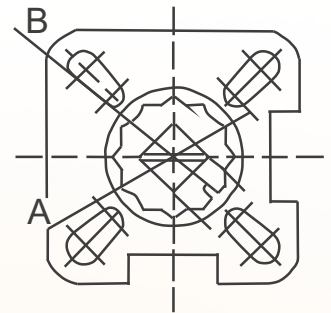
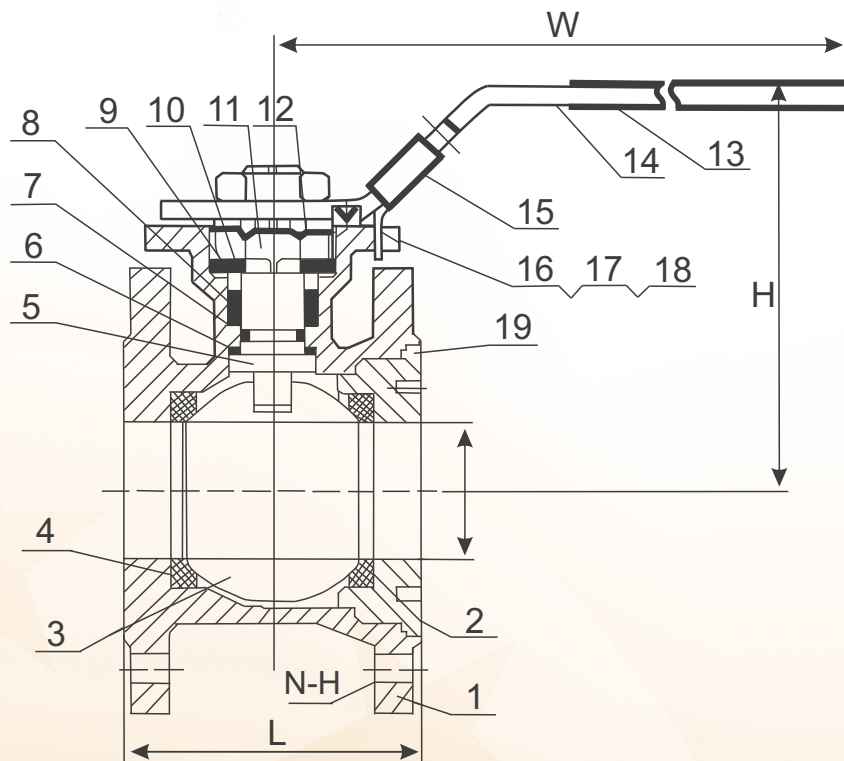
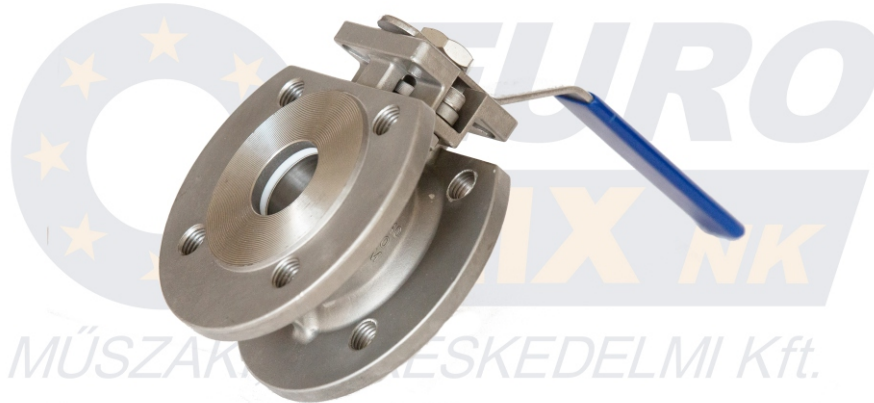


SAVÁLLÓ GÖMBCSAP

1 részes, karimás szendvics

1 PC Wafer Flanged Ball



Size	DN15	DN20	DN25	DN32	DN40	DN50	DN65	DN80	DN100
D	15	20	25	32	38	50	65	76	94
P	9	9	11	11	14	14	17	17	22
A	32	32	40	40	50	50	70	70	102
B	40	40	50	50	70	70	102	102	102
N	4	4	4	4	4	4	4	8	8
H	M12	M12	M12	M16	M16	M16	M16	M16	M16
W	140	140	152	152	188	188	230	230	230
H	78	84	93	105	112	120	145	155	189
L	42	44	50	60	65	80	113	120	154

Item	Designation	Material
1	Body	CF8/CF8M
2	Cap	CF8/CF8M
3	Ball	CF8/CF8M
4	Seal	RPTFE
5	Stem	SUS304
6	Stem Packing	PTFE
7	O-Ring	NBR
8	Stem Seat	PTFE
9	Gland	SUS304
10	Spring Washer	SUS301
11	Nut	SUS304
12	Washer	SUS304
13	Plastic Cover	PLASTIC
14	Handle	SUS304
15	Locking	SUS304
16	Bolt	SUS304
17	Bolt Nut	SUS304
18	Bolt Washer	SUS304
19	Body Packing	PTFE

Features

Pn16

Full Port

Investment Casting

Blow-out Proof Stem

ISO5211 Mounting Pad

Locking Device Handle

PED97/23/EC(CE 0035) Approved

Casting Approved AD2000-W0

Design: En12516

End Flange: DIN2542-DIN2545

Inspection Testing: DIN3230, EN12266