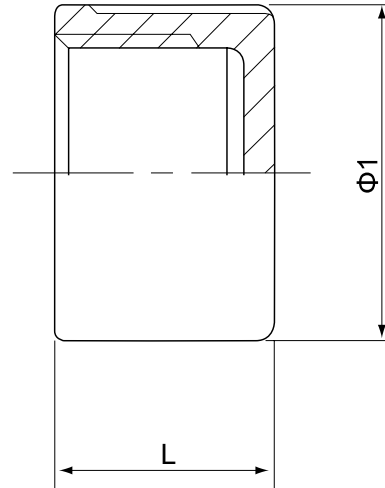


# Saválló menetes kerek zárókupak NK 1017

## Round Cap



Standard	SIZE	1/8	1/4	3/8	1/2	3/4	1	1 1/4	1 1/2	2	2 1/2	3	4
ISO4144 *	Φ1	13.7	16.7	20.7	25.2	30.7	38.2	47.5	54	66.5	83.5	97	123
	L	13.5	17	17.5	21	22.5	26	29	29	33.5	38.5	42	48.5
standard	SIZE	1/8	1/4	3/8	1/2	3/4	1	1 1/4	1 1/2	2	2 1/2	3	4
EN-10241 *	Φ1	15	18	21	27	30	38	50	55	70	92	109	132
	L	13	17	19	20	24	25	28	28	34	40	45	50
standard	SIZE	1/8	1/4	3/8	1/2	3/4	1	1 1/4	1 1/2	2	2 1/2	3	4
JIS	Φ1	14	17	20	20	30	36	45	52	63	76	89	121
	L	14	15	17	24	24	28	30	32	36	40	45	54
standard	SIZE	1/8	1/4	3/8	1/2	3/4	1	1 1/4	1 1/2	2	2 1/2	3	4
SP-114	Φ1	19.1	21.6	26	30.6	36.5	45.1	54.9	61.9	75.6	84.3	100.7	128.6
	L	16.9	18	18.9	22	25	27	30	31.8	35.7	38.9	43.9	50.6

\* Raktáron

### FEATURES

- The thread ends conform to  
ASME B1.20.1(NPT)  
DIN 2999 & BS21  
ISO 228/1 & ISO 7/1
- Dimension conform to  
ISO 4144, SP114  
EN-10241, JIS
- 150 LBS
- Material conform to  
ASTM A351-CF8M/1.4408  
ASTM A351-CF8/1.4401  
ASTM A216-WCB  
AISI 304, 304L, 316, 316L, 301, 430 ECT