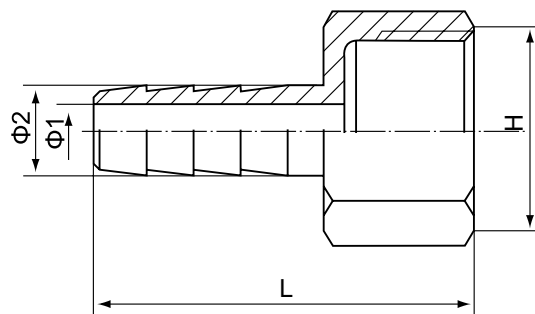


Saválló menetes tömlőcsatlakozó belső menetes NK 1039

Female Hex. Hose Nipple



Standard	SIZE	1/8	1/4	3/8	1/2	3/4	1	1 1/4	1 1/2	2	2 1/2	3	4
ISO4144 *	Φ1	4	5	7	10.5	15	22	27.5	34	45	59	71	95
	Φ2	8	9	11.5	15	20	27	33	39.5	52	67	80	105
	L	39.5	45	50.5	59	67.5	78	81	85	93.5	103.5	112	121.5
	H	13.5	17	20.5	25	31	38	47	53	66	82	95.5	121.5
Standard	SIZE	1/8	1/4	3/8	1/2	3/4	1	1 1/4	1 1/2	2	2 1/2	3	4
EN-10241 *	Φ1	2.5	4.4	7.5	10.7	17.1	23.4	28.8	35.1	47.5	58.5	68.2	87.6
	Φ2	4.5	6.4	9.5	12.7	19.1	25.4	31.8	38.1	50.8	63.5	76.2	101.6
	L	35.7	36.2	43.1	48.6	50.6	51.3	58.1	69.2	80.2	94.1	117	128
	H	14	16	18	26	30	35	45	52	63	81	95	118
Standard	SIZE	1/8	1/4	3/8	1/2	3/4	1	1 1/4	1 1/2	2	2 1/2	3	4
JIS	Φ1	5	6	8	11.5	16.5	23	28	35	47	61	73	96
	Φ2	9	11	12	16	22	29.5	36	42	54	65.5	78.5	103
	L	33	38	41	49	58	72	74	77	90	104	136	149
	H	14	17	20	20	30	36	45	52	63	76	89	121
Standard	SIZE	1/8	1/4	3/8	1/2	3/4	1	1 1/4	1 1/2	2	2 1/2	3	4
SP-114	Φ1	4	5	6	9	15	21.5	27	33	45	55	68	91
	Φ2	7	9	10	14	20	27.5	34	40	52	63.5	76.5	103
	L	32	34	39	45	48	53	59	65	72	80	89	104
	H	13.5	15.4	19.7	26.2	31.9	39.8	47.8	55.9	66.5	83.3	98.2	123

* Raktáron

FEATURES

- The thread ends conform to
ASME B1.20.1(NPT)
DIN 2999 & BS21
ISO 228/1 & ISO 7/1
- Dimension conform to
ISO 4144, SP114
EN-10241, JIS
- 150 LBS
- Material conform to
ASTM A351-CF8M/1.4408
ASTM A351-CF8/1.4401
ASTM A216-WCB
AISI 304, 304L, 316, 316L, 301, 430 ECT