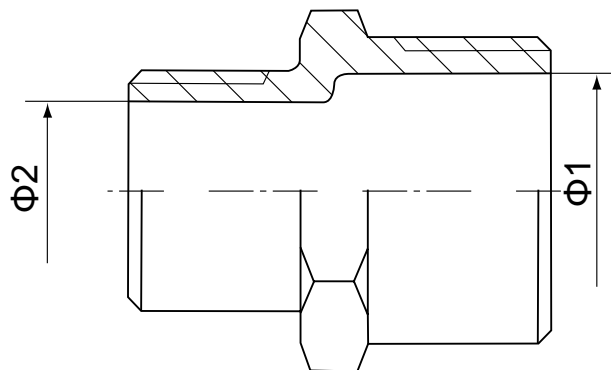


Saválló menetes szűkítő közcsavar NK 1012

Red. Hex. Nipple



| | | | | | | | | | | | |
|------------|------|-------|-------|-------|-------|-------|-------|------|-------|-------|-------|
| Standard | SIZE | 1/4 | 3/8 | 1/2 | 3/4 | 1 | 1 1/4 | | | | |
| | | 1/8 | 1/4 | 1/4 | 3/8 | 3/8 | 1/2 | 1/2 | 3/4 | 3/4 | 1 |
| ISO4144 * | Φ1 | 8 | 11.5 | 15 | 15 | 20.5 | 20.5 | 26 | 26 | 34.5 | 34.5 |
| | Φ2 | 5.5 | 8 | 8 | 11.5 | 11.5 | 15 | 15 | 20.5 | 20.5 | 26 |
| Standard | SIZE | 1 1/2 | | 2 | | 2 1/2 | | 3 | | 4 | |
| | | 1 | 1 1/4 | 1 1/4 | 1 1/2 | 1 1/2 | 2 | 2 | 2 1/2 | 2 1/2 | 3 |
| ISO4144 * | Φ1 | 40 | 40 | 51 | 51 | 65.5 | 65.5 | 77.5 | 77.5 | 101.5 | 101.5 |
| | Φ2 | 26 | 34.5 | 34.5 | 40 | 40 | 51 | 51 | 65.5 | 65.5 | 77.5 |
| Standard | SIZE | 1/4 | 3/8 | 1/2 | 3/4 | 1 | 1 1/4 | | | | |
| | | 1/8 | 1/4 | 1/4 | 3/8 | 3/8 | 1/2 | 1/2 | 3/4 | 3/4 | 1 |
| EN-10241 * | Φ1 | 7 | 9.4 | 13.7 | 13.7 | 19 | 19 | 25.5 | 25.5 | 32 | 32 |
| | Φ2 | 4.3 | 7 | 7 | 9.4 | 9.4 | 13.7 | 13.7 | 19 | 19 | 25.5 |
| Standard | SIZE | 1 1/2 | | 2 | | 2 1/2 | | 3 | | 4 | |
| | | 1 | 1 1/4 | 1 1/4 | 1 1/2 | 1 1/2 | 2 | 2 | 2 1/2 | 2 1/2 | 3 |
| EN-10241 * | Φ1 | 38.5 | 38.5 | 50.2 | 50.2 | 63.8 | 63.8 | 77 | 77 | 102 | 102 |
| | Φ2 | 25.5 | 32 | 32 | 38.5 | 38.5 | 50.2 | 50.2 | 63.8 | 63.8 | 77 |
| Standard | SIZE | 1/4 | 3/8 | 1/2 | 3/4 | 1 | 1 1/4 | | | | |
| | | 1/8 | 1/4 | 1/4 | 3/8 | 3/8 | 1/2 | 1/2 | 3/4 | 3/4 | 1 |
| JIS | Φ1 | 8.5 | 11 | 16 | 16 | 19 | 19 | 26 | 26 | 33.5 | 33.5 |
| | Φ2 | 5 | 8.5 | 8.5 | 11 | 11 | 16 | 16 | 19 | 19 | 26 |
| Standard | SIZE | 1 1/2 | | 2 | | 2 1/2 | | 3 | | 4 | |
| | | 1 | 1 1/4 | 1 1/4 | 1 1/2 | 1 1/2 | 2 | 2 | 2 1/2 | 2 1/2 | 3 |
| JIS | Φ1 | 39 | 39 | 50 | 50 | 64.5 | 64.5 | 75.5 | 75.5 | 100.5 | 100.5 |
| | Φ2 | 26 | 33.5 | 33.5 | 39 | 39 | 50 | 50 | 64.5 | 64.5 | 75.5 |

* Raktáron

FEATURES

- The thread ends conform to
ASME B1.20.1(NPT)
DIN 2999 & BS21
ISO 228/1 & ISO 7/1
- Dimension conform to
ISO 4144, SP114
EN-10241, JIS
- 150 LBS
- Material conform to
ASTM A351-CF8M/1.4408
ASTM A351-CF8/1.4401
ASTM A216-WCB
AISI 304, 304L, 316, 316L, 301, 430 ECT