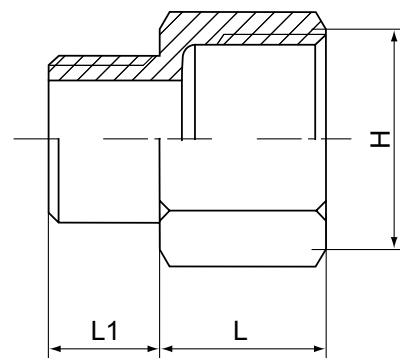


Saválló menetes szűkítő közcsavar BK NK 1011 Red.Socket MF

FEATURES

- The thread ends conform to
ASME B1.20.1(NPT)
DIN 2999 & BS21
ISO 228/1 & ISO 7/1
- Dimension conform to
ISO 4144, SP114
EN-10241, JIS
- 150 LBS
- Material conform to
ASTM A351-CF8M/1.4408
ASTM A351-CF8/1.4401
ASTM A216-WCB
AISI 304, 304L, 316, 316L, 301, 430 ECT



Standard	SIZE	1/4	3/8	1/2		3/4		1		1 1/4			
		1/8	1/4	1/4	3/8	3/8	1/2	1/2	3/4	3/4	1		
ISO4144 *	L	17	17.5	21	21	22.5	22.5	26	26	29	29		
	L1	8	10.5	10.5	11	11	14.5	14.5	15.5	15.5	18		
	H	17	20.5	25	25	31	31	38	38	47	47		
ISO4144 *	SIZE	1 1/2		2		2 1/2		3		4			
	L	1	1 1/4	1 1/4	1 1/2	1 1/2	2	2	2 1/2	2 1/2	3		
	L1	29	29	33.5	33.5	38.5	38.5	42	42	48.8	48.5		
EN-10241 *	L1	18	20.5	20.5	20.5	20.5	25	25	27	27	30		
	H	53	53	66	66	82	82	95.5	95.5	121.5	121.5		
	SIZE	1/4		3/8		1/2		3/4		1		1 1/4	
EN-10241 *	L	17	19	20	20	24	24	25	25	28	28		
	L1	8.9	11	11	12.2	12.2	14.9	14.9	16.5	16.5	19.5		
	H	18	21	27	27	30	30	38	38	50	50		
EN-10241 *	SIZE	1/4		3/8		1/2		3/4		1		1 1/4	
	L	1/8	1/4	1/4	3/8	3/8	1/2	1/2	3/4	3/4	1		
	L1	28	28	34	34	40	40	45	45	50	50		
EN-10241 *	L1	19.5	21.5	21.5	22.2	22.2	24.4	24.4	28.5	28.5	31.7		
	H	55	55	70	70	92	92	109	109	132	132		
	SIZE	1/4		3/8		1/2		3/4		1		1 1/4	
JIS	L	1/8	1/4	1/4	3/8	3/8	1/2	1/2	3/4	3/4	1		
	L1	15	17	24	24	24	24	28	30	29	30		
	H	8	10.5	10.5	11	11	14.5	14.5	15.5	15.5	18		
JIS	L1	17	20	20	20	30	30	36	36	45	45		
	SIZE	1 1/2		2		2 1/2		3		4			
	L	1	1 1/4	1 1/4	1 1/2	1 1/2	2	2	2 1/2	2 1/2	3		
JIS	L1	32	32	36	36	40	40	45	45	54	54		
	H	18	20.5	20.5	20.5	20.5	25	25	27	27	30		
	H	52	52	63	63	76	76	89	89	121	121		
SP-114	SIZE	1/4		3/8		1/2		3/4		1		1 1/4	
	L	1/8	1/4	1/4	3/8	3/8	1/2	1/2	3/4	3/4	1		
	L1	15.5	18	23.5	23.5	24.6	24.6	29.9	29.9	30.6	30.6		
SP-114	L1	12.9	12	12	12.8	12.8	15	15	17	17	19.6		
	H	15.4	19.7	26.2	26.2	31.9	31.9	39.8	39.8	47.8	47.8		
	SIZE	1 1/2		2		2 1/2		3		4			
SP-114	L	1	1 1/4	1 1/4	1 1/2	1 1/2	2	2	2 1/2	2 1/2	3		
	L1	32.5	32.5	35.6	35.6	42.7	42.7	44.7	44.7	48	48		
	H	19.6	20.7	20.7	22.8	22.8	25.6	25.6	27.8	27.8	31		
SP-114	L	55.9	55.9	66.5	66.5	83.3	83.3	98.2	98.2	123	123		