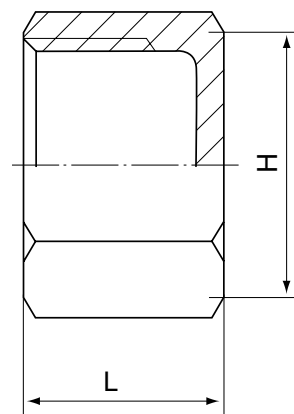
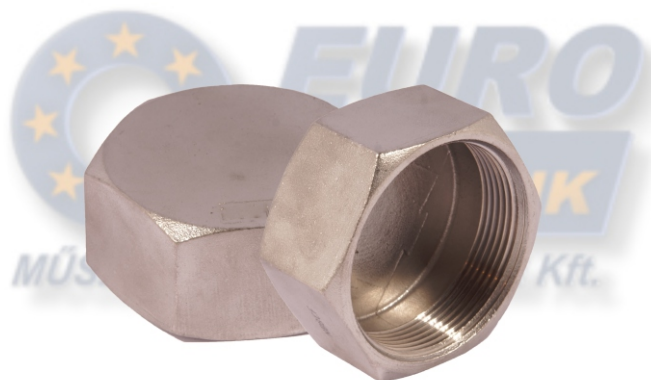


Saválló menetes hatlapfejű zárókupak NK 1015

Hex. Cap



Standard	SIZE	1/8	1/4	3/8	1/2	3/4	1	1 1/4	1 1/2	2	2 1/2	3	4
ISO4144 *	H	13.5	17	20.5	25	31	38	47	53	66	82	95.5	121.5
	L	13.5	17	17.5	21	22.5	26	29	29	33.5	38.5	42	48.5
Standard	SIZE	1/8	1/4	3/8	1/2	3/4	1	1 1/4	1 1/2	2	2 1/2	3	4
EN-10241 *	H	15	18	21	27	30	38	50	55	70	92	109	132
	L	13	17	19	20	24	25	28	28	34	40	45	50
Standard	SIZE	1/8	1/4	3/8	1/2	3/4	1	1 1/4	1 1/2	2	2 1/2	3	4
JIS	H	14	17	20	20	30	36	45	52	63	76	89	121
	L	14	15	17	24	24	28	30	32	36	40	45	54
Standard	SIZE	1/8	1/4	3/8	1/2	3/4	1	1 1/4	1 1/2	2	2 1/2	3	4
SP-114	H	13.5	15.4	19.7	26.2	31.9	39.8	47.8	55.9	66.5	83.3	98.2	123
	L	15.4	15.5	18	23.5	24.6	29.9	30.6	32.5	35.6	42.7	44.7	48

* Raktáron

FEATURES

- The thread ends conform to
ASME B1.20.1(NPT)
DIN 2999 & BS21
ISO 228/1 & ISO 7/1
- Dimension conform to
ISO 4144, SP114
EN-10241, JIS
- 150 LBS
- Material conform to
ASTM A351-CF8M/1.4408
ASTM A351-CF8/1.4401
ASTM A216-WCB
AISI 304, 304L, 316, 316L, 301, 430 ECT