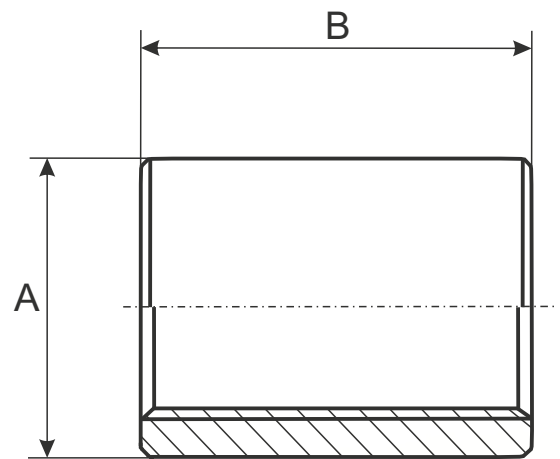
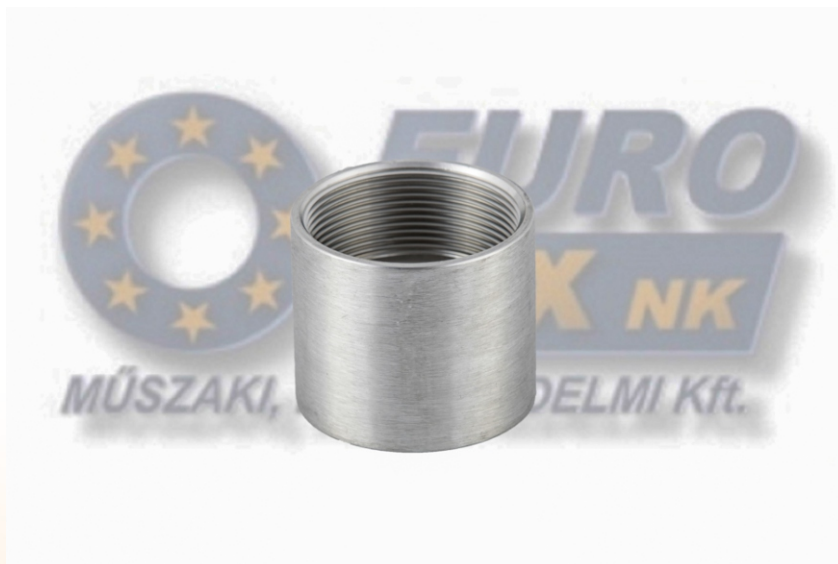


Saválló menetes félkarmantyú

W/OD

Half Socket W/OD Machined



Standard	Méret	1/8	1/4	3/8	1/2	3/4	1	1 1/4	1 1/2	2	2 1/2	3	4
		6	8	10	15	20	25	32	40	50	65	80	100
K EN szabvány	A	15	18	21,2	26,2	31,2	38,4	46,2	52,5	64,8	81,1	94,5	121
	B	8	10,7	12,2	15,2	16,2	19,9	22,3	22,3	26,4	30	32	38