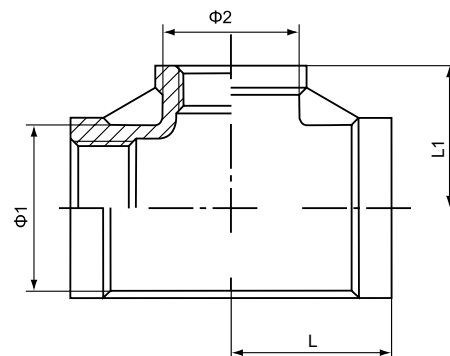


Saválló menetes t-szűkítő NK 1008

Red.Tee

FEATURES

- The thread ends conform to
ASME B1.20.1(NPT)
DIN 2999 & BS21
ISO 228/1 & ISO 7/1
- Dimension conform to
ISO 4144
SP114
EN-10241
JIS
- 150 LBS
- Material conform to
ASTM A351-CF8M/1.4408
ASTM A351-CF8/1.4401
ASTM A216-WCB
AISI 304, 304L, 316, 316L, 301, 430 ECT



Standard	SIZE	1/4		3/8		1/2		3/4		1		1 1/4	
		1/8	1/4	1/4	3/8	3/8	1/2	1/2	3/4	3/4	1		
ISO4144 *	Φ1	16	20	24.5	24.5	30	30	37.5	37.5	46.5	46.5		
	Φ2	13	16	16	20	20	24.5	24.5	30	30	37.5		
	L	18	22	24	25	28	30	33	35	40	42		
	L1	18	20	24	26	28	29	32	34	38	40		
Standard	SIZE	1 1/2		2		2 1/2		3		4			
		1	1 1/4	1 1/4	1 1/2	1 1/2	2	2	2 1/2	2 1/2	3		
ISO4144 *	Φ1	53	53	65.5	65.5	82	82	95.5	95.5	121.5	121.5		
	Φ2	37.5	46.5	46.5	53	53	65.5	65.5	82	82	95.5		
	L	45	48	54	55	62	65	72	75	90	91		
	L1	41	45	48	52	55	60	62	72	78	83		
Standard	SIZE	1/4		3/8		1/2		3/4		1		1 1/4	
		1/8	1/4	1/4	3/8	3/8	1/2	1/2	3/4	3/4	1		
EN-10241 *	Φ1	21.3	23.5	30	30	35	35	43	43	52	52		
	Φ2	17	21.3	21.3	23.5	23.5	30	30	35	35	43		
	L	21	23.6	28	28	33	33	38	38	45	45		
	L1	19	21	21	23.6	23.6	28	28	33	33	38		
Standard	SIZE	1 1/2		2		2 1/2		3		4			
		1	1 1/4	1 1/4	1 1/2	1 1/2	2	2	2 1/2	2 1/2	3		
EN-10241 *	Φ1	58	58	71	71	86.6	86.6	100.2	100.2	125	125		
	Φ2	43	52	52	58	58	71	71	86.6	86.6	100.2		
	L	50	50	58	58	70	70	78.5	78.5	97	97		
	L1	38	45	45	50	50	58	58	70	70	78.5		
Standard	SIZE	1/4		3/8		1/2		3/4		1		1 1/4	
		1/8	1/4	1/4	3/8	3/8	1/2	1/2	3/4	3/4	1		
JIS	Φ1	19	22	26	26	32	32	39	39	48	48		
	Φ2	16	19	19	22	22	26	26	32	32	39		
	L	19	23	27	27	32	32	38	38	46	46		
	L1	17	19	19	23	23	27	27	32	32	38		
Standard	SIZE	1 1/2		2		2 1/2		3		4			
		1	1 1/4	1 1/4	1 1/2	1 1/2	2	2	2 1/2	2 1/2	3		
JIS	Φ1	55	55	67	67	83.5	83.5	98.2	98.2	123	123		
	Φ2	39	48	48	55	55	67	67	83.5	83.5	98.2		
	L	48	48	57	57	69	69	78	78	96	96		
	L1	38	46	46	48	48	57	57	69	69	78		
Standard	SIZE	1/4		3/8		1/2		3/4		1		1 1/4	
		1/8	1/4	1/4	3/8	3/8	1/2	1/2	3/4	3/4	1		
SP-114	Φ1	15.4	19.7	26.2	26.2	31.9	31.9	39.8	39.8	47.8	47.8		
	Φ2	13.5	15.4	15.4	19.7	19.7	26.2	26.2	31.9	31.9	39.8		
	L	20.6	23.6	28.5	28.5	33.3	33.3	38.1	38.1	44.5	44.5		
	L1	20.6	20.6	20.6	23.6	23.6	28.5	28.5	33.3	33.3	38.1		
Standard	SIZE	1 1/2		2		2 1/2		3		4			
		1	1 1/4	1 1/4	1 1/2	1 1/2	2	2	2 1/2	2 1/2	3		
SP-114	Φ1	55.9	55.9	66.5	66.5	83.3	83.3	98.2	98.2	123	123		
	Φ2	39.8	47.8	47.8	55.9	55.9	66.5	66.5	83.3	83.3	98.2		
	L	49	49	57.1	57.1	68	68	77.6	77.6	96.8	96.8		
	L1	38.1	44.5	44.5	49	49	57.1	57.1	68	68	77.6		