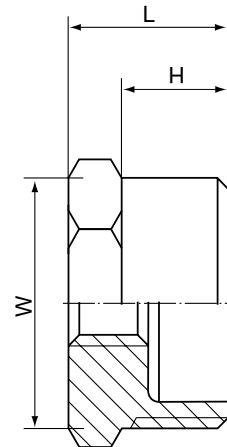


Saválló menetes szűkítő közcsavar KB NK 1019

Hex. Bushing

FEATURES

- The thread ends conform to
ASME B1.20.1(NPT)
DIN 2999 & BS21
ISO 228/1 & ISO 7/1
- Dimension conform to
ISO 4144, SP114
EN-10241, JIS
- 150 LBS
- Material conform to
ASTM A351-CF8M/1.4408
ASTM A351-CF8/1.4401
ASTM A216-WCB
AISI 304, 304L, 316, 316L, 301, 430 ECT



Standard	SIZE	1/4		3/8		1/2		3/4		1		1 1/4	
		1/8	1/4	1/4	3/8	3/8	1/2	1/2	3/4	3/4	1	1	
ISO4144 *	H	11.5	12	14.5	14.5	15.5	15.5	17.5	17.5	20	20	20	20
	L	16	16.5	20	20	21	21	24	24	27	27	27	27
	W	14	18	22	22	27.5	27.5	34.5	34.5	43	43	43	43
Standard	SIZE	1 1/2		2		2 1/2		3		4			
		1	1 1/4	1 1/4	1 1/2	1 1/2	2	2	2 1/2	2 1/2	3		
ISO4144 *	H	20.5	20.5	24	24	27	27	30	30	35	35	35	35
	L	28.5	28.5	32	32	37	37	40	40	45	45	45	45
	W	49	49	61	61	76	76	90	90	115	115	115	115
Standard	SIZE	1 1/2		2		2 1/2		3		4			
		1	1 1/4	1 1/4	1 1/2	1 1/2	2	2	2 1/2	2 1/2	3		
EN-10241 *	H	10.8	11.9	15.6	15.4	17.4	17.5	19.7	19.7	21.9	21.9	21.9	21.9
	L	15.2	16.5	21	21	24	24	27	27	30	30	30	30
	W	16	18	26	26	30	30	35	35	45	45	45	45
Standard	SIZE	1/4		3/8		1/2		3/4		1		1 1/4	
		1/8	1/4	1/4	3/8	3/8	1/2	1/2	3/4	3/4	1	1	
EN-10241 *	H	25.8	25.8	24.8	24.8	30.9	30.9	33	33	35	35	35	35
	L	38	38	36	36	45	45	47	47	52	52	52	52
	W	52	52	63	63	81	81	95	95	110	110	110	110
Standard	SIZE	1/4		3/8		1/2		3/4		1		1 1/4	
		1/8	1/4	1/4	3/8	3/8	1/2	1/2	3/4	3/4	1	1	
JIS	H	12	13	16	16	18	18	20	20	22	22	22	22
	L	17	18	21	21	24	24	27	27	30	30	30	30
	W	17	21	26	26	31	31	38	38	46	46	46	46
Standard	SIZE	1 1/2		2		2 1/2		3		4			
		1	1 1/4	1 1/4	1 1/2	1 1/2	2	2	2 1/2	2 1/2	3		
JIS	H	23	23	25	25	28	28	31	31	37	37	37	37
	L	32	32	36	36	39	39	44	44	51	51	51	51
	W	53	53	63	63	80	80	90	90	119	119	119	119
Standard	SIZE	1/4		3/8		1/2		3/4		1		1 1/4	
		1/8	1/4	1/4	3/8	3/8	1/2	1/2	3/4	3/4	1	1	
SP-114	H	11.7	13	15	15	18	18	19.6	19.6	22.5	22.5	22.5	22.5
	L	18	19	21	21	26	26	27.6	27.6	32	32	32	32
	W	16.7	21	25	25	29	29	37	37	48	48	48	48
Standard	SIZE	1 1/2		2		2 1/2		3		4			
		1	1 1/4	1 1/4	1 1/2	1 1/2	2	2	2 1/2	2 1/2	3		
SP-114	H	22	22	25.5	25.5	32	32	34.5	34.5	38	38	38	38
	L	32	32	37.6	37.6	44	44	46	46	52	52	52	52
	W	53	53	63	63	80	80	92	92	116	116	116	116