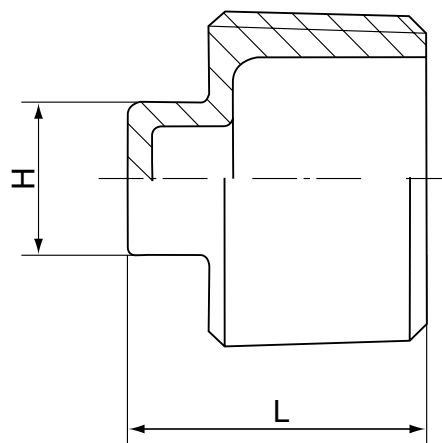


Saválló menetes négylapfejű dugó NK 1013

Square Plug



Standard	SIZE	1/8	1/4	3/8	1/2	3/4	1	1 1/4	1 1/2	2	2 1/2	3	4
ISO4144 *	L	13	15.5	16	20.5	21.5	25	27.5	28.5	33	37	42	48
	H	6	7	8	10	12	14	16	20	22	28	32	40
EN-10241 *	L	19	20	22	25	27.5	32	35	37	39	48	52	62
	H	7	9	11	13	16	20	24	25	32	42	46	58
JIS	L	16	19	21	25	28	31	35	36	41	48	58	62
	H	7	9	12	14	17	19	23	26	32	41	45.5	57.5
SP-114	L	16	18	20	22	27	32	36	37	43	46	50	62
	H	7	9	10	11	16	19	22	22	27	32	36	58

* Raktáron

FEATURES

- The thread ends conform to
ASME B1.20.1(NPT)
DIN 2999 & BS21
ISO 228/1 & ISO 7/1
- Dimension conform to
ISO 4144, SP114
EN-10241, JIS
- 150 LBS
- Material conform to
ASTM A351-CF8M/1.4408
ASTM A351-CF8/1.4401
ASTM A216-WCB
AISI 304, 304L, 316, 316L, 301, 430 ECT