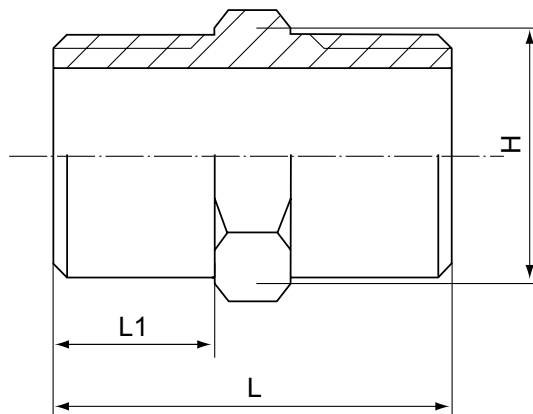


## Saválló menetes közcsavar NK 1010 Hex. Nipple



Standard	SIZE	1/8	1/4	3/8	1/2	3/4	1	1 1/4	1 1/2	2	2 1/2	3	4
ISO4144 *	L	20	25	27	34	36.5	42	47.5	17.5	57	61	67.5	80
	L1	8	10.5	11	14.5	15.5	18	20.5	20.5	25	27	30	36
	H	11	15	18	22	28	35	43.5	49.5	62	77.5	90.5	117
Standard	SIZE	1/8	1/4	3/8	1/2	3/4	1	1 1/4	1 1/2	2	2 1/2	3	4
EN-10241 *	L	23.6	27.8	28	34	40	46	52.5	54	62	70	78.4	94
	L1	8.9	11	12.2	14.9	16.5	19.5	21.5	22.2	24.4	28.5	31.7	38.2
	H	12	16	19	21.6	30	36	46	50	64.5	79.5	90	120
Standard	SIZE	1/8	1/4	3/8	1/2	3/4	1	1 1/4	1 1/2	2	2 1/2	3	4
JIS	L	32	34	36	42	47	52	56	60	66	73	82	93
	L1	11	12	13	16	18	20	22	23	26	28	33	36
	H	14	17	21	26	31	38	46	53	63	81	94	118
Standard	SIZE	1/8	1/4	3/8	1/2	3/4	1	1 1/4	1 1/2	2	2 1/2	3	4
SP-114	L	33	30	31.8	38	43.8	49.7	54	59.9	65.5	72.9	80	91
	L1	12.9	12	12.8	15	17	19.6	20.7	22.8	25.6	27.8	31	35.7
	H	12.5	17	20.9	26	31	38	45	52	62.7	80	92	117.5

\* Raktáron

### FEATURES

- The thread ends conform to
  - ASME B1.20.1(NPT)
  - DIN 2999 & BS21
  - ISO 228/1 & ISO 7/1
- Dimension conform to
  - ISO 4144, SP114
  - EN-10241, JIS
- 150 LBS
- Material conform to
  - ASTM A351-CF8M/1.4408
  - ASTM A351-CF8/1.4401
  - ASTM A216-WCB
  - AISI 304, 304L, 316, 316L, 301, 430 ECT