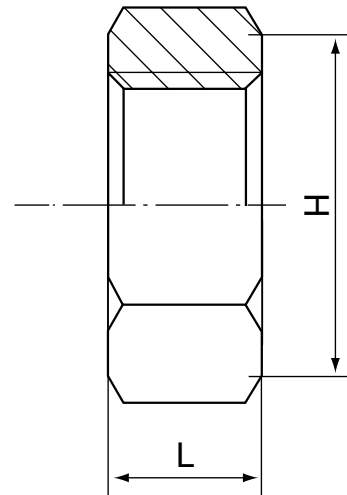


## Saválló menetes hatlapfejű ellenanya NK 1018

### Hex. Back Nut



Standard	SIZE	1/8	1/4	3/8	1/2	3/4	1	1 1/4	1 1/2	2	2 1/2	3	4
ISO4144 *	L	5	6	6	7	7	9	11	11	13	15	17	20
	H	15	18	22	27	32	40	48	55	68	85	100	125
Standard	SIZE	1/8	1/4	3/8	1/2	3/4	1	1 1/4	1 1/2	2	2 1/2	3	4
EN-10241 *	L	6	7	8	10	11	10	11	12	13	15	17	20
	H	14	23	26	31	37	46	55	63	76	92	109	132
Standard	SIZE	1/8	1/4	3/8	1/2	3/4	1	1 1/4	1 1/2	2	2 1/2	3	4
JIS	L	7	7	7.8	8	11	12	12.9	14.6	15	17	20.7	24
	H	19	19	24	30	37.7	42	52	60	72	88	98.3	125

\* Raktáron

#### FEATURES

- The thread ends conform to  
ASME B1.20.1(NPT)  
DIN 2999 & BS21  
ISO 228/1 & ISO 7/1
- Dimension conform to  
ISO 4144, SP114  
EN-10241, JIS
- 150 LBS
- Material conform to  
ASTM A351-CF8M/1.4408  
ASTM A351-CF8/1.4401  
ASTM A216-WCB  
AISI 304, 304L, 316, 316L, 301, 430 ECT